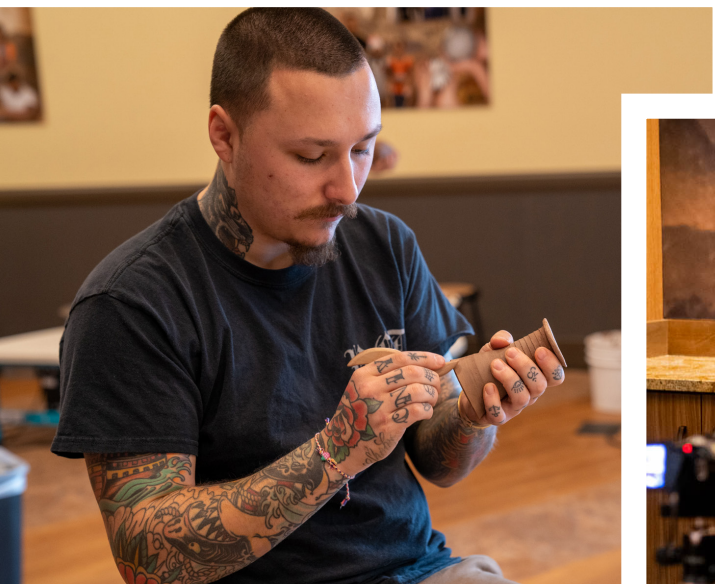
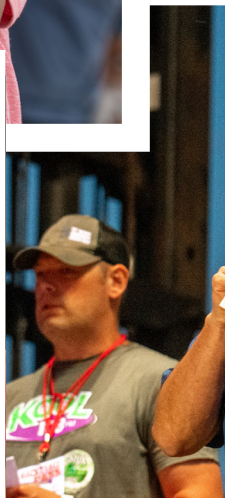




# NATIVEGREEN

**Shakopee Mdewakanton Sioux Community**  
Sustainability Report  
2022









# GOOD NEIGHBOR GOOD EMPLOYER GOOD STEWARD OF THE EARTH

---

The Shakopee Mdewakanton Sioux Community (SMSC) continues to celebrate new achievements in pursuit of our mission and values. We would like to take this opportunity to reflect on some of the many successes that occurred in 2022. We hope this inspires our friends and neighbors to join in all the great work that still remains.

## OUR MISSION

---

Caring for Uŋci Maka (Grandmother Earth) is at the heart of what the SMSC strives to do—now and for future generations. We are fully dedicated to serving our members, supporting other tribes and organizations across the globe, creating strong partnerships, and protecting our natural resources for the benefit of everyone.

## NATIVEGREEN

---

NativeGreen unifies all of our past accomplishments and future work together in a public forum. To bring Uŋci Maka back to a path of balance with modern life will take extraordinary commitments to sustainability by communities like ours. As others chart their own paths, our friends and neighbors can look to NativeGreen for the bold leadership and innovation happening throughout the SMSC.



# OUR LAND

Managed invasive species on

**395**

acres, with some help from goats.

**PRESCRIBED BURNS MIMICKED NATURAL FIRE AND REGENERATION ON 250 ACRES.**



**92 hours**  
PLANTING  
NATIVE SPECIES



**4,520** native trees

**385** native shrubs

**1,551** native plants

PLANTED THIS YEAR

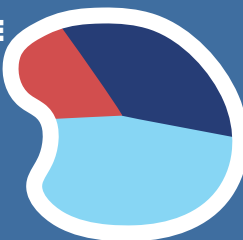


**32 ACRES WERE SEEDED TO RESTORE AN OAK SAVANNA ALONG DEANS LAKE IN SHAKOPEE, MN.**



# OUR WATER

**REMOVED 118 INVASIVE CARP FROM PIKE LAKE IN PRIOR LAKE, MN AND STOCKED WITH NATIVE BLUEGILL AND YELLOW PERCH.**



The SMSC acquired new properties that included new water resources, including O'Dowd Lake and Gifford Lake.

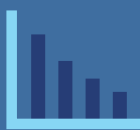
**THREE LAKES, FIVE STREAMS, AND TWO WETLANDS WERE MONITORED FOR WATER QUALITY.**



**Completed 961 erosion and sediment control inspections at 48 sites.**



**MYSTIC LAKE TOTAL PHOSPHORUS REACHED THE LOWEST CONCENTRATIONS IN ALL YEARS OF SAMPLING**



**Added macroinvertebrates surveys to 22 years of water quality monitoring.**



Howard Lake aquatic vegetation survey discovered a unique freshwater sponge, which is an indicator of pristine water quality and a healthy aquatic habitat.





# REDUCE, REUSE, RECYCLE

LAUNCHED FREE FOOD WASTE COMPOSTING  
IN PARTNERSHIP WITH SCOTT COUNTY.



THE SMSC ORGANICS RECYCLING FACILITY RECYCLED **61,000 TONS** OF YARD AND FOOD WASTE (2% FROM THE SMSC, 98% FROM THE TWIN CITIES METRO).

THE SMSC  
REDUCED OFFICE  
PAPER USAGE BY

**30%**  
COMPARED TO  
**2018.**



Mazopiya donated  
its excess meals to  
Loaves & Fishes.

Reusable and compostable dishware replaced  
non-recyclable materials across the SMSC  
business and government operations.

SMSC WATER BOTTLING SOLD NEARLY **8,300**  
RETURNABLE 5-GALLON JUGS (EQUIVALENT  
TO 250,000 SINGLE-USE WATER BOTTLES).



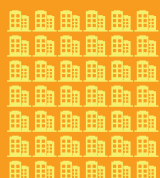
**8,300**



The SMSC shredded more  
than **45,000** pounds of  
documents from employees  
and Community Member  
homes and businesses for  
recycling into new products.



# BUILDING AND ENERGY



**30 BUILDINGS'**  
ELECTRICITY  
NEEDS WERE  
MATCHED 100%  
TO WIND FARMS  
IN THE DAKOTAS.

CO2e emissions

**32%**

Reduced refrigerants'  
CO2e emissions **32%**  
below the 2018 baseline  
(ozone friendly options  
are still >1,000x more  
potent greenhouse  
gases than CO2).



90% of all commercial  
real estate (2.3M ft2)  
began Deep Energy  
Retrofit Audits for  
energy conservation,  
concluding in 2022.



EXPANDED  
COMMUNITY-  
WIDE ENERGY  
MONITORING  
TO INCLUDE ALL  
STREETLIGHTS,  
TRAFFIC  
CAMERAS, AND  
IRRIGATION  
SYSTEMS.



ENERGY USE REMAINED

**10%**  
below baseline

even as the  
SMSC reopened  
operations after  
the COVID-19  
shutdown.

Residential  
reductions were  
even stronger:

**13%**  
below 2018 baseline.







# EDUCATION



THE SMSC'S UNDERSTAND  
NATIVE MINNESOTA  
CAMPAIGN HAS  
FEATURED 15 PODCASTS  
WITH HOST REBECCA  
CROOKS-STRATTON.

Hočokata Ti hosted **7,000** visitors

to the exhibit *Mdewakanton: Dwellers of the Spirit Lake*, which features a section on sustainability at the SMSC.



1,966 participants learned about our planet during **SMSC Earth Week**.

**#1**

INA MAK'A YUONIHANPI,  
A YOUTH NATURE  
PROGRAM, HELD ITS  
FIRST EVENTS.



Three educational events taught Playworks students about water resource science, including buoyancy, stream dynamics, and erosion.

Nearly **300** SMSC neighbors learned about prairies and the importance of deep-rooted native plants at New Prague Elementary Garden Day.



# FOOD SECURITY



EMPLOYEES ASSEMBLED MORE THAN  
**30,000 MEALS**  
FOR NEIGHBORS IN NEED.

PLANTED MORE THAN  
**20 EDIBLE, MEDICINAL,  
OR MATERIALLY USEFUL  
NATIVE SPECIES.**

**Wozupi  
Tribal  
Gardens**

grew organic produce  
throughout the year.



**800 FAMILIES**

Partnerships with Second Harvest Heartland and the CAP Agency provided meals to more than 800 families through food rescue events.

PLANTED 500 SUGAR MAPLES AS PART OF A FOREST RESTORATION.





# GOOD NEIGHBOR



DONATED MORE THAN

**1,200**

BACKPACKS OF SCHOOL  
SUPPLIES TO KIDS IN NEED.

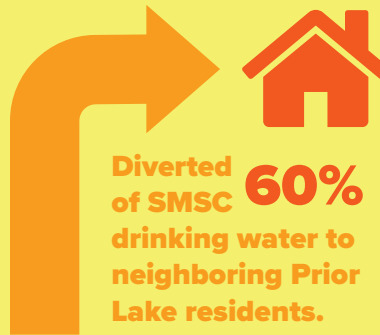
## 2022 EVENTS:

ZIKADAN BIRDS

MINI STORIES

FABULOUS FALL  
COLORS

**300 FLEECE BLANKETS MADE BY  
EMPLOYEES AND DONATED TO  
LOCAL FAMILIES IN NEED.**



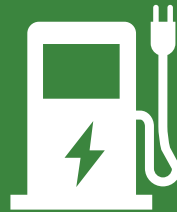
Diverted  
of SMSC **60%**  
drinking water to  
neighboring Prior  
Lake residents.



# HOW WE MOVE

FUEL USE DECREASED 18% ACROSS THE  
SMSC FLEET COMPARED TO 2018.

**18%** ↓↓↓↓



20 Tesla and Level  
2 EV stations  
provided more than  
**1,700 sessions** at  
no cost to guests/  
employees.

**MORE THAN 100 DAILY RIDERS**  
used the SMSC's public transit  
and motor pool programs.



A SKATE PARK BROKE GROUND IN  
2021, OFFERING MORE SPACE FOR  
GATHERING IN THE COMMUNITY.

**THE CITY OF SHAKOPEE'S NEW  
MOUNTAIN BIKE TRAIL OPENED,  
WITH SUPPORT FROM THE SMSC.**



**SMSC SECURITY PATROLLED BY  
BICYCLE, PROMOTING HEALTH  
AND REDUCING VEHICLE USE.**



The Minnesota Zoo's Treetop  
Trail plans neared completion,  
with support from the SMSC.  
It will be the longest elevated  
trail loop in the world.







The SMSC Print Shop has proudly printed this report and other publications on Monadnock Paper Mills' products for several years. Monadnock produces over 50% of its electrical requirement from on-site low-impact river hydro power. All of their products are made with 100% renewable electricity through the investment in Green-e certified wind powered RECs, and manufactured carbon neutral through the investment in emission reductions (CERs) certified under the Kyoto CDM Registry. Its products are certified by Preferred by Nature to the industry's Chain of Custody Standard, and this report was made from 100% post-consumer recycled content. Its facilities have also maintained ISO 14001 Environmental Management System certification for more than a decade.

Supply chain impacts (including Scope 3 greenhouse gas emissions) are a very important aspect of the SMSC's short-, medium-, and long-term goals. By sourcing our goods and services from the most socially and environmentally responsible companies, we maximize our influence and support for the businesses and leadership that our planet depends on.

The tree pictured on the front and back cover of this report is one of the largest living American basswood (*Tilia americana*) trees in the state of Minnesota. It was discovered by SMSC Land Department scientists in 2018. At last measure, its crown spread was an average of 140 feet and it measured a circumference of more than 17 feet around.



**NATIVEGREEN**  
SMSCNATIVEGREEN.ORG

